

**Time Measures KS2 SATS Standard Worksheet**

1.



These are the opening times at a swimming pool.

	opening times		
	am		pm
Monday	Pool closed		
Tuesday			
Wednesday	10:30	to	5:30
Thursday	10:30	to	8:30
Friday	10:30	to	9:00
Saturday	8:00	to	6:00
Sunday	7:00	to	4:00

How many **hours** is the pool open on a **Sunday**?

hours

1 mark

Which **day** has the **latest** closing time?

.....

1 mark

Habib arrives at the pool at **5:20pm** on **Saturday**.

How many **minutes** is it before the pool closes?

minutes

1 mark

2. The time is

8:15

John has to be ready for school in half an hour.

Tick (✓) the time when he has to be ready.

8:20

8:25

8:30

8:45

8:55

3. The clock shows the same time as one of the watches.

Draw a line to match the clock to a watch.



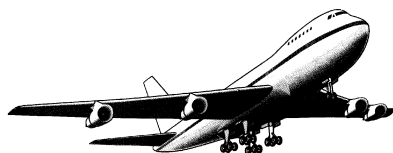
1 mark

4. An aeroplane takes off on Tuesday at

22:47

It lands on Wednesday at

07:05

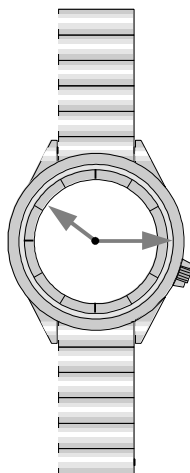


How long in hours and minutes is the flight?

hours	minutes
-------	---------

1 mark

5. This was the time on Selin's watch when she **set off** for a walk.



What time did the watch show 20 minutes **before** this?



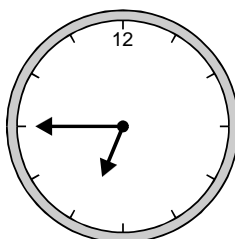
1 mark

What time did it show an hour and a half **after she set off** for the walk?



1 mark

6. Here is a clock.



How many minutes is it **until** this clock shows 7:30?

minutes

1 mark

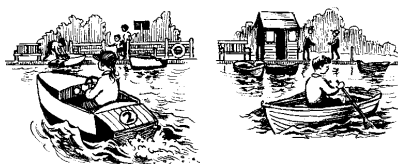
Here is another clock.

14 : 53

What time will the clock show in 20 minutes?

1 mark

7.



Boat Hire	
<b>Motor boats</b> £1.50 for 15 minutes	<b>Rowing boats</b> £2.50 for 1 hour

How much does it cost to hire a **rowing boat** for three hours?



£

1 mark

Sasha pays **£3.00** to hire a **motor boat**.

She goes out at **3:20 pm**.

By what time must she **return**?

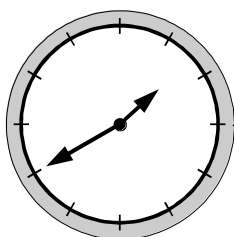


pm

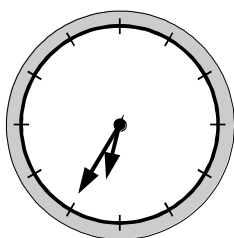
1 mark

8. Here are three clock faces.

Match each clock face to the same time on a digital clock.

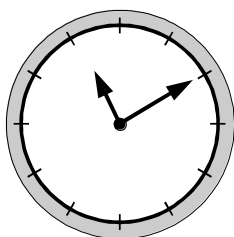


11:10



2:55

1:40



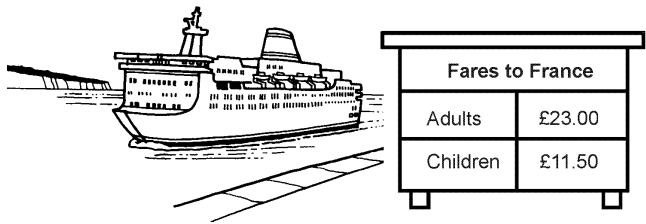
8:10

6:35

7:35

2 marks

9.



There are **2 adults** and **3 children** in a family.  
How much does it cost the **family** to go on the ferry?

Show  
your **method**.  
You may get  
a mark

2 marks

On the ferry they change **pounds** for French **francs**.  
For every **£1** they get **7 francs**.  
How many **francs** do they get for **£150**?



francs

1 mark

10. Here is the calendar for August 1998.

August 1998						
Sun	Mon	Tues	Wed	Thur	Fri	Sat
						1
2	3	4	5	6	7	8
9	10	11	12	13	14	15
16	17	18	19	20	21	22
23	24	25	26	27	28	29
30	31					

Simon's birthday is on **August 20th**.  
In 1998 he had a party on the **Sunday after** his birthday.  
What was the **date** of his party?



1 mark

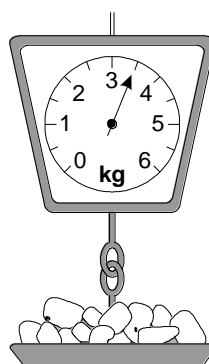
Tina's birthday is on **September 9th**.  
On what **day of the week** was her birthday in 1998? .....

1 mark

11. This table shows the weight of some fruits and vegetables.

Complete the table.

	grams	kilograms
potatoes	3500	3.5
apples		1.2
grapes	250	
ginger		0.03



2 marks

- 12.



A bottle holds **1 litre** of lemonade.

Rachel fills **5** glasses with lemonade.

She puts **150 millilitres** in each glass.

How much lemonade is left in the bottle?

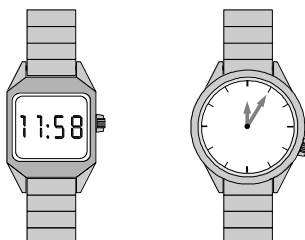
Show your **method**. You may get a mark.

ml

2 marks

13. One of these watches is **3 minutes fast**.

The other watch is **4 minutes slow**.



What is the correct time?

14. Write the correct whole number in the box.

5 miles is approximately  kilometres.

1 mark

- 15.



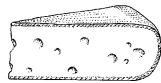
Here are the **start** and **finish** times of some children doing a sponsored walk.

	Start time	Finish time
Claire	9:30	10:55
Ruth	9:35	11:05
Dan	9:40	11:08
Tim	9:45	11:05

How much longer did Claire take than Tim?

1 mark

16. This piece of cheese has a mass of **350 grams**.

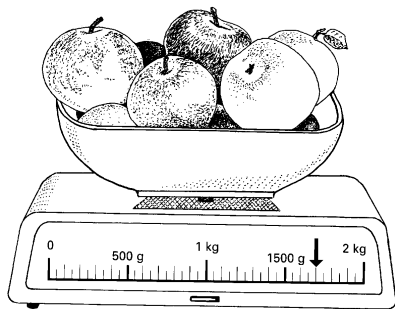


Mark an **arrow** (↓) on the scale to show the reading for **350 g**.



1 mark

Here are some apples.



What is the **total mass** of these apples?

1 mark

17. These are the start and finish times on a video cassette recorder.

**START 14:45**

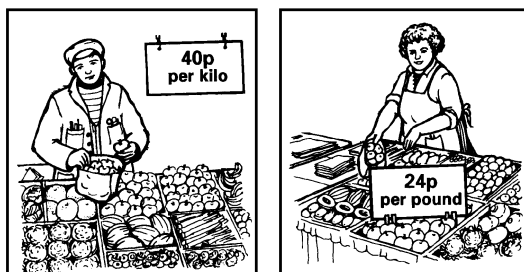
**FINISH 17:25**

For how long was the video recording?

hours	minutes
-------	---------

1 mark

- 18.



Mr Green sells apples  
at 40p per **kilogram**.

Mrs Ball sells apples  
at 24p per **pound**.

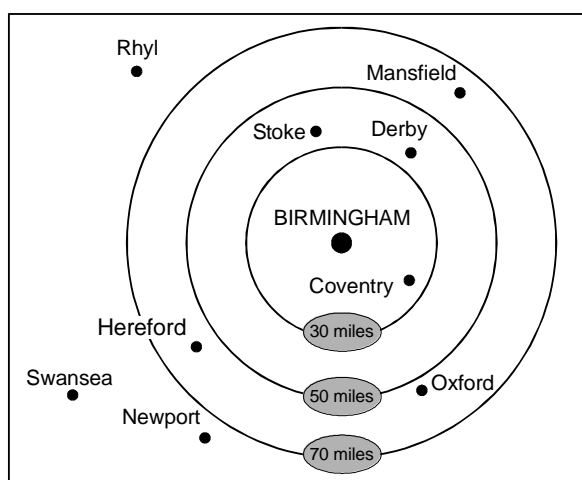
Work out who sells the cheaper apples.  
Show how you worked it out.

.....

--

1 mark

19. This diagram shows the distances of different towns from Birmingham.






Write the name of a town which is **between 30 and 50 miles** from Birmingham.

.....

1 mark

Use the diagram to estimate the distance in **miles** from **Birmingham** to **Mansfield**.

 miles

1 mark

21. Here is a recipe for raspberry ice cream.

**raspberry ice cream  
for 8 people**

$\frac{1}{2}$  litre of cream

1kg raspberries

250g sugar



This recipe is for **8 people**.

Josie makes enough raspberry ice cream for **12 people**.

How much **cream** does she use?


 litre

1 mark

Fred makes raspberry ice cream in the same way.

He uses **2½ kg** of **raspberries**.

How much **sugar** does he use?

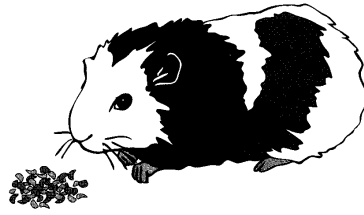
  
Show  
your **method**.  
You may get  
a mark.

g

2 marks

22. A packet contains **1.5 kilograms** of guinea pig food.

Remi feeds her guinea pig **30 grams** of food each day.



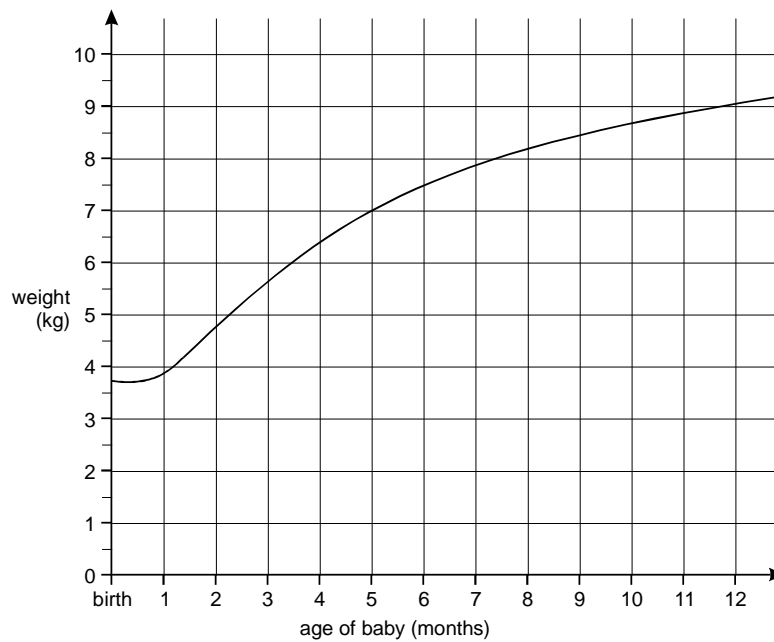
How many days does the packet of food last?

Show your **method**.  
 You may get a mark.

days

2 marks

23. This graph shows how the weight of a baby changed over twelve months.



From the graph, what was the weight of the baby at **10 months**?

kg

1 mark

How much **more** did the baby weigh at 5 months than at birth?

kg

24.



Cheddar cheese costs £7.50 for 1kg.

Marie buys 200 grams of cheddar cheese.

How much does she pay?

£
---

1 mark

Cream cheese costs £3.60 for 1kg.

Robbie buys a pot of cream cheese for 90p.



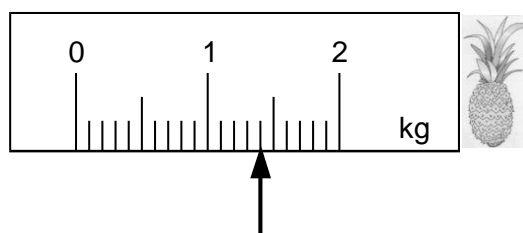
How many grams of cream cheese does he buy?

Show your **method**.  
 You may get a mark.

grams

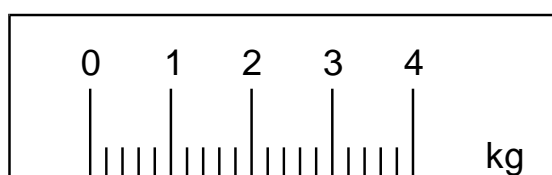
2 marks

25. On this scale, the arrow (↑) shows the weight of this pineapple.



Here is a **different** scale.

Mark with an arrow (↑) the weight of the **same** pineapple.



1 mark